



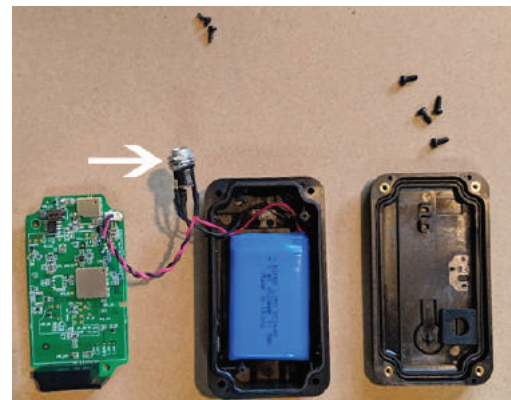
# RetrieverLTE

## Recharge Guide

**1 Remove 4 Screws** - After the 4 philips screws are removed from the back of the tracker, open the case.



**2 Remove 2 Screws** - Remove the two screws on the circuit board and set the board aside. Under the circuit board you will see the charge port.



**3 Charge and Re-Assemble** - Reseat the charge port into the case and set the circuit board back into position. Install the two screws in the circuit board. Next, install the cover and replace the remaining 4 screws. Your device is now re-charged and ready for use.

